



Helminth

M.Sc. Ruqyaa k.J

<https://www.youtube.com/watch?v=AwqOWNILG3M>

Schistosoma spp.

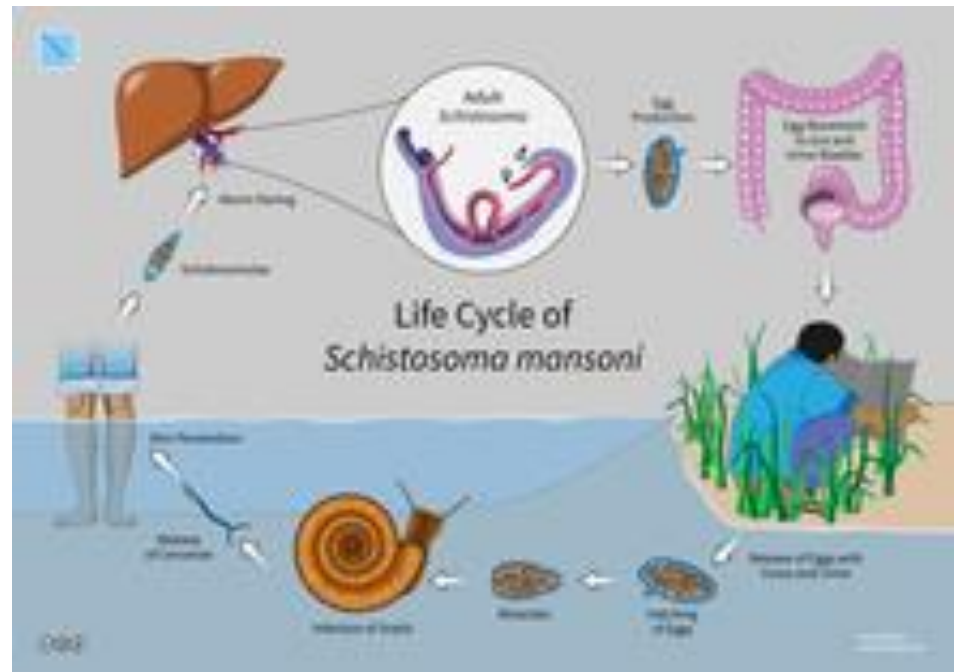
- There are three main types of schistosomiasis, caused by closely related organisms:



- (1) Japonica, or Eastern, schistosomiasis is caused by *Schistosoma japonicum*.
- (2) Manson's, or intestinal, schistosomiasis is caused by *S. mansoni*.
- (3) Vesical, or urinary, schistosomiasis is caused by *S. haematobium*.

- **A saxual formes (snail).**
 - Eggs
 - larvae (called miracidia).
 - sporocysts
 - Cercaria

- **saxual formes (Human)**
 - Schistosomula
 - adults

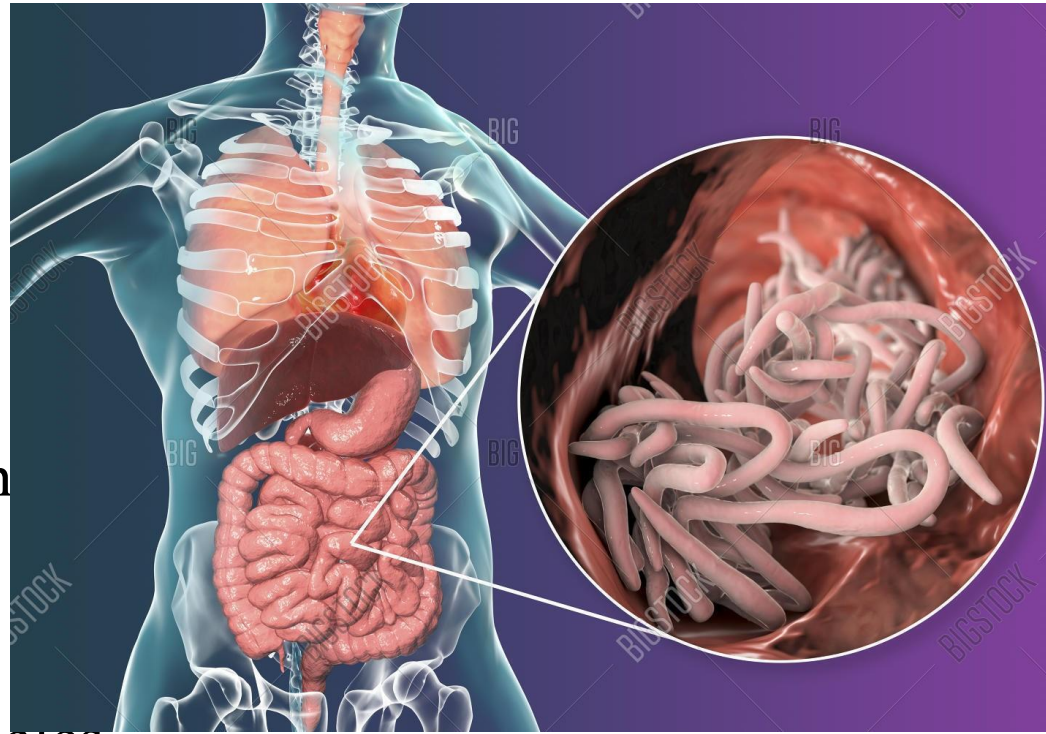


- Adult flukes are elongate tubular worms (10-20mm long), with rudimentary oral and ventral suckers. Males are shorter and stouter than females, and they have a longitudinal cleft (gynecophoral canal or schist) in which the longer slender female lies folded.

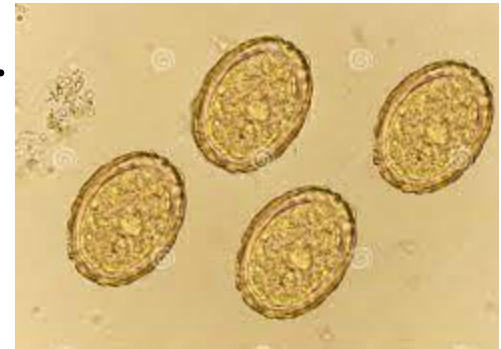


Ascaris lumbricoides

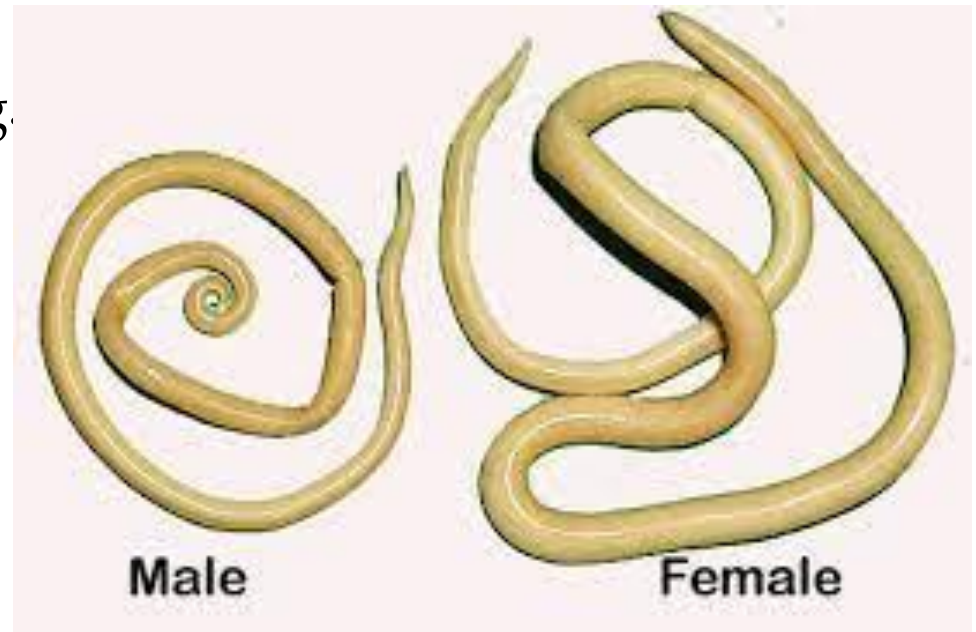
- *Ascaris lumbricoides*, a roundworm, infects humans via the fecal-oral route.
- Eggs released by adult females are shed in feces.
- This organism is responsible for the disease ascariasis.



- Fertilized eggs wide with a thick outer shell.
- *Ascaris lumbricoides* is characterized by its great size. Males are 15–31 cm long.



- The male's posterior end is curved ventrally and has a bluntly pointed tail.
- Females are 20–49 cm long.



Echinococcus granulosus



- also called the hydatid worm, hyper tape-worm or dog tapeworm, is a that dwells in the small intestine of canids as an adult, and humans, where it causes cystic echinococcosis, also known as hydatid disease.



Embryonated
egg

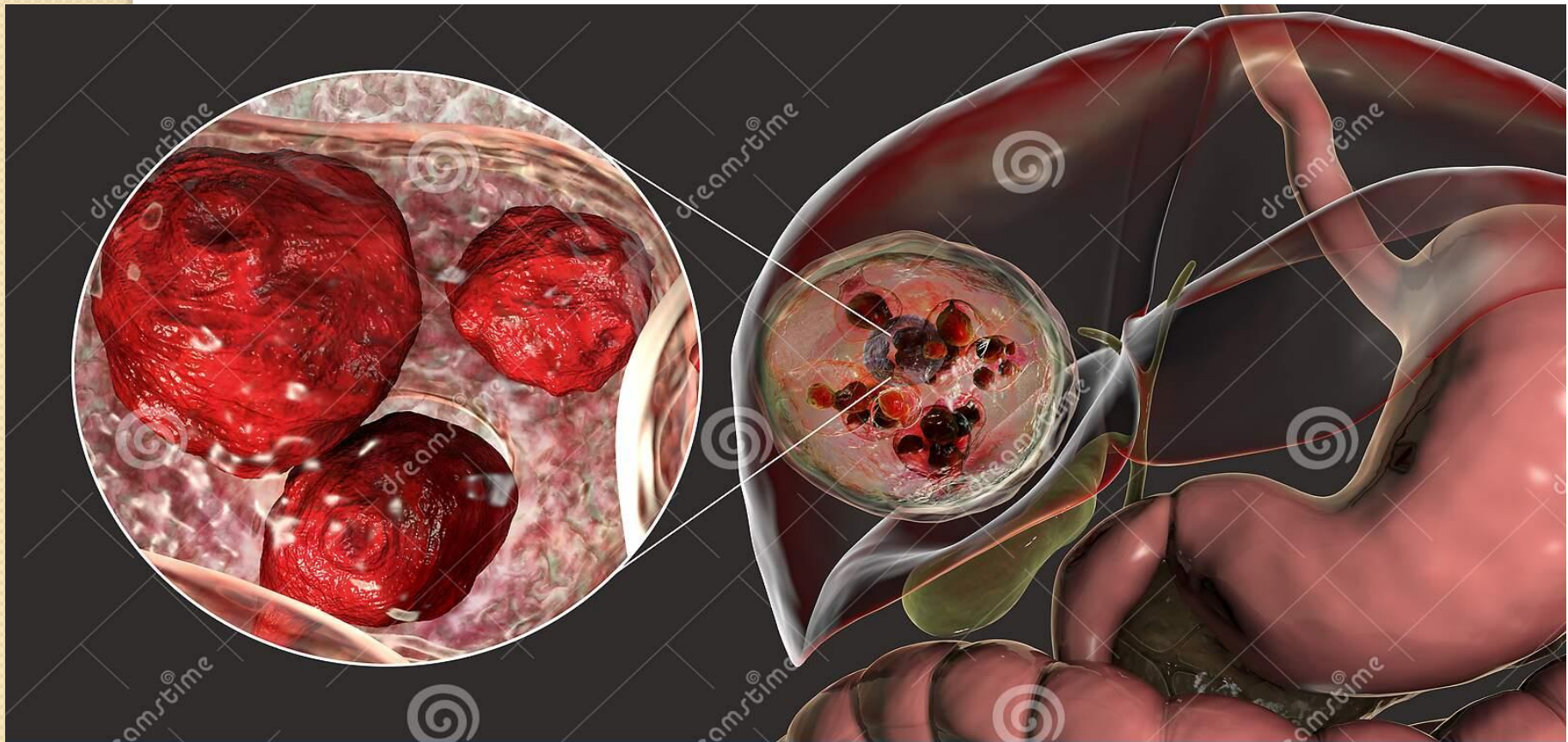


Hydatid cyst



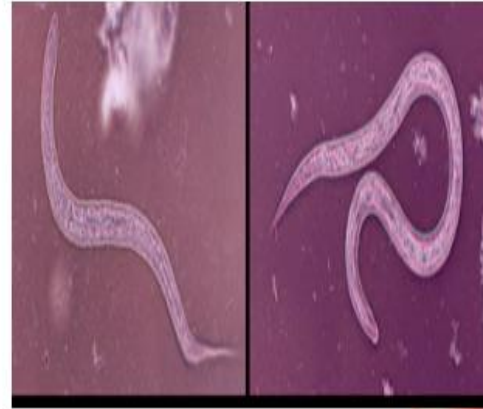
Adult

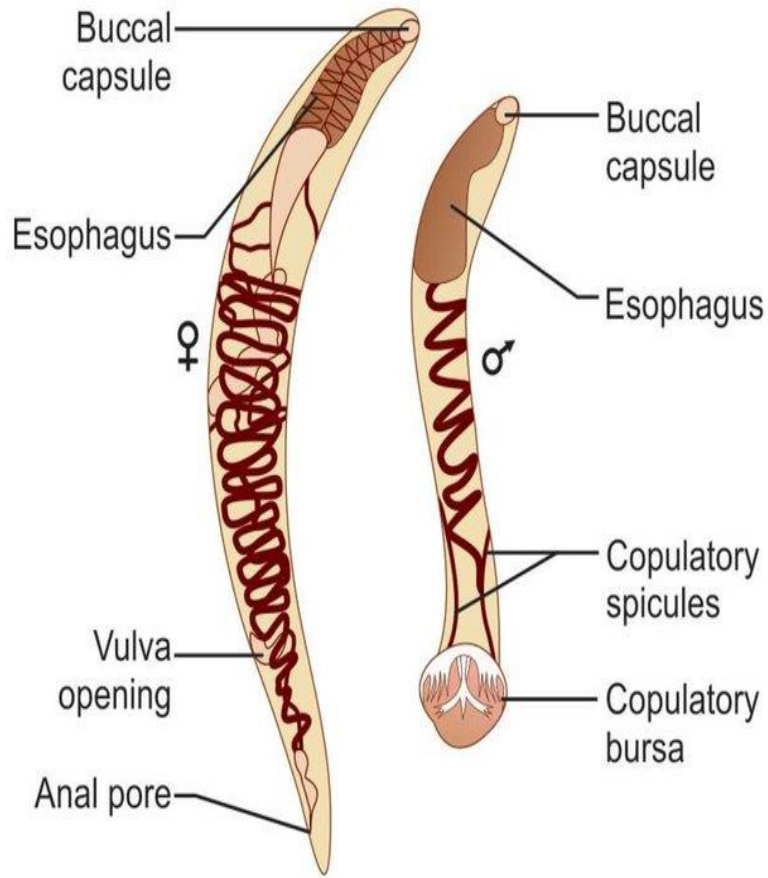
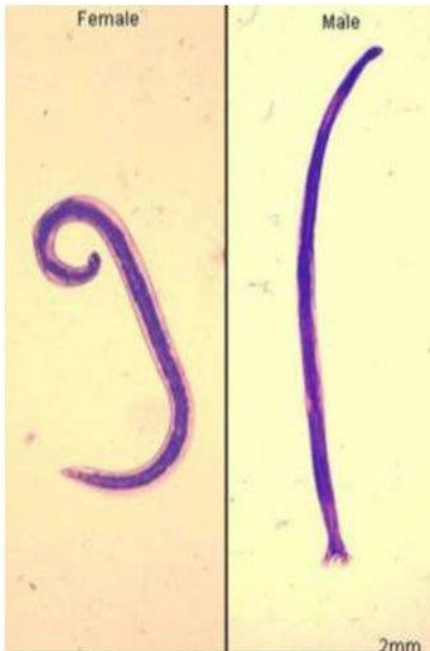
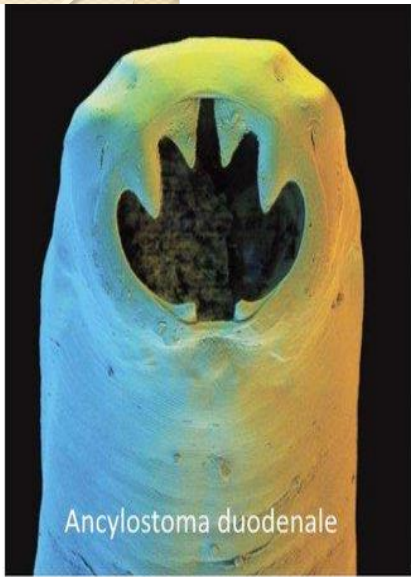
- Human echinococcosis (hydatidosis, or hydatid disease) is caused by the larval stages of cestodes (tapeworms) of the genus *Echinococcus*. *Echinococcus granulosus* (sensu lato) causes cystic echinococcosis and is the form most frequently encountered.



Ancylostoma Duodenale

- The adult hookworms reside in the small intestine-of man particularly in the jejunum, less often in the duodenum, and rarely in the ileum.
- It causes “ancylostomiasis” in man





- The female worms measure about 10 to 13 mm x 0.6 mm while the males measure about 8 to 10 mm x 0.5 mm.



Enterobius vermicularis



- Enterobius vermicularis, also called pinworm, is one of the most common helminth infections in the world, with most cases occurring in children.

Enterobius vermicularis.



***Enterobius* egg
in feces.**

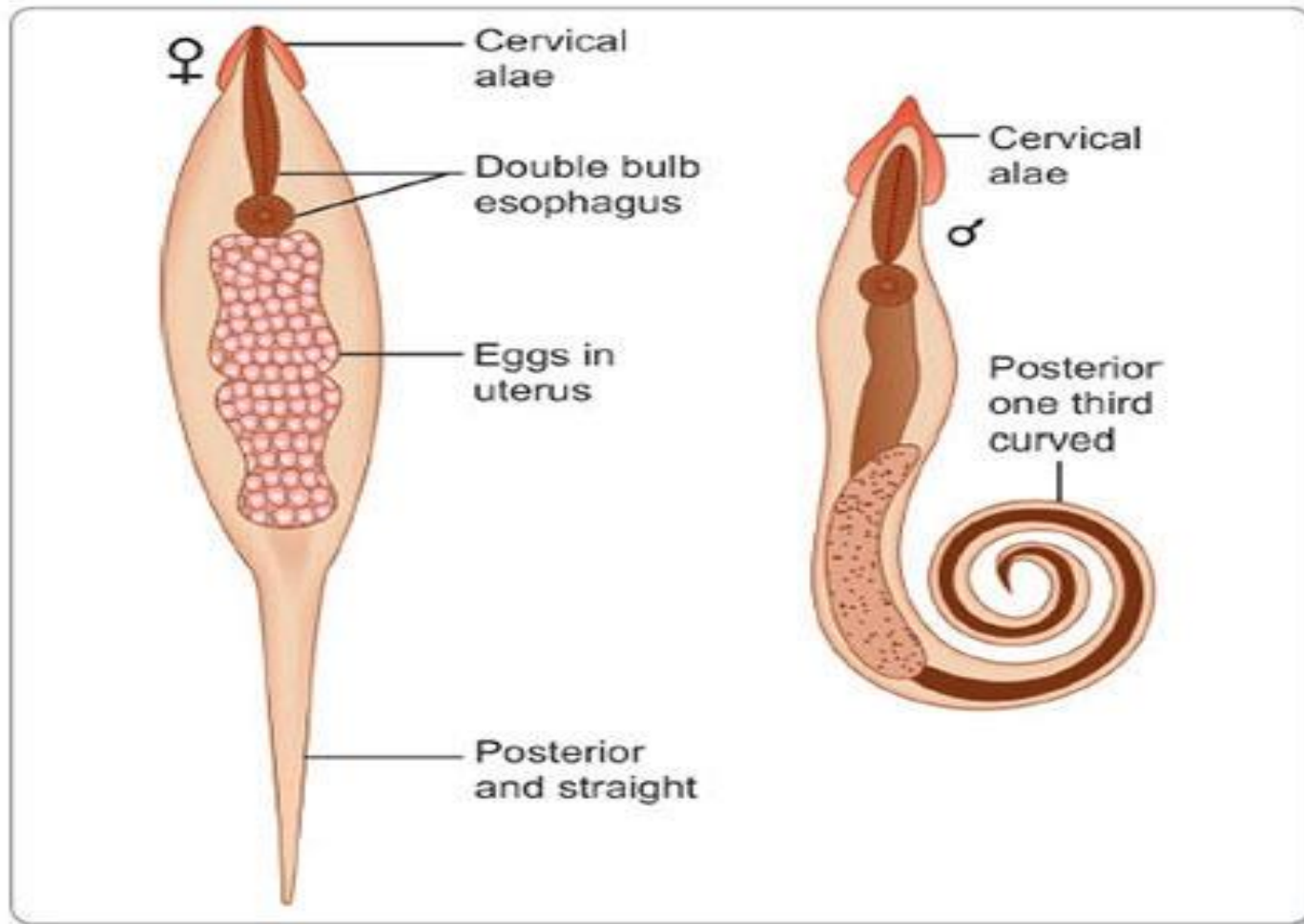


***Enterobius*
vermicularis
female.**



***Enterobius*
vermicularis
male.**

- Female worms are around 8 to 13 mm long while male worms are 2 to 5 mm long.





Thank you